



**2011**

**Cawston Cold Storage Ltd.**

**By Darrell Taylor**

# CONTINUING SAVINGS FOR GROWERS

- The staff at Cawston Cold Storage have been working hard to put more money in your pocket.



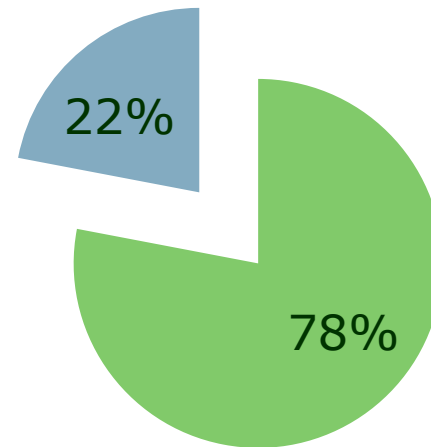
# With new packaging ideas



# And new packaging prices

## Box pricing for 2010 compared to 2009

■ new cost ■ saving



# Packing

- **At Cawston Cold Storage Ltd., we feel pride in our brand and the quality of the product we produce. This quality is reflected in the way we do our work**



# Why C/A

- **CA storage conditions are required for over 50% of the apple crop harvested each year. Lack of a dedicated certified organic CA facility's within BC places our overall organic fruit returns at risk**



# Project goals

- **The purpose of this project is to secure long term CA storage which is not available in BC, thus securing the long term viability of our organic community.**



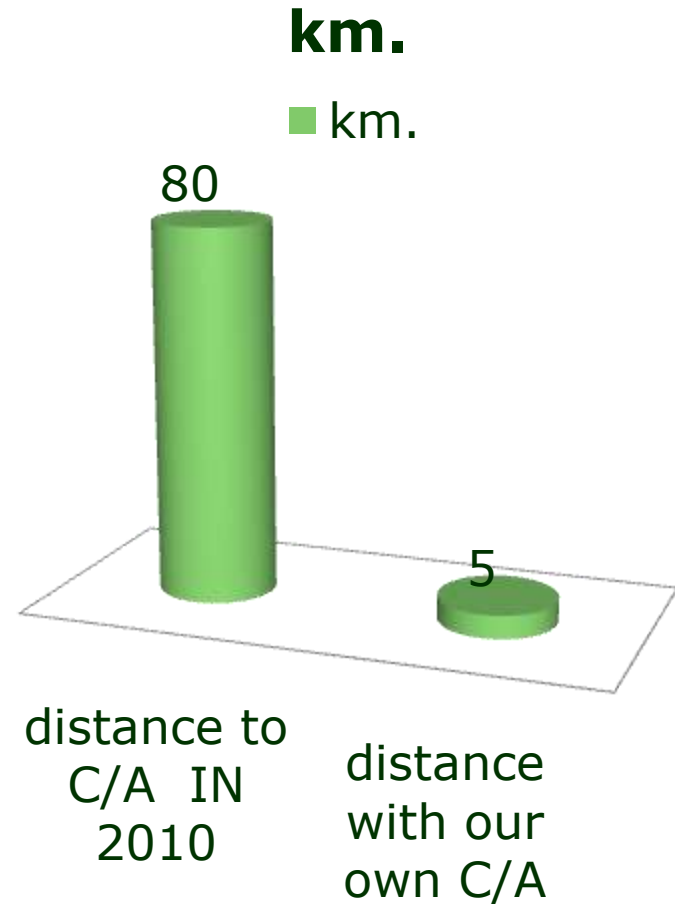
- **. This project will ensure that the organic agricultural industry that we have developed together will remain a strong part of our community for generations to come.**





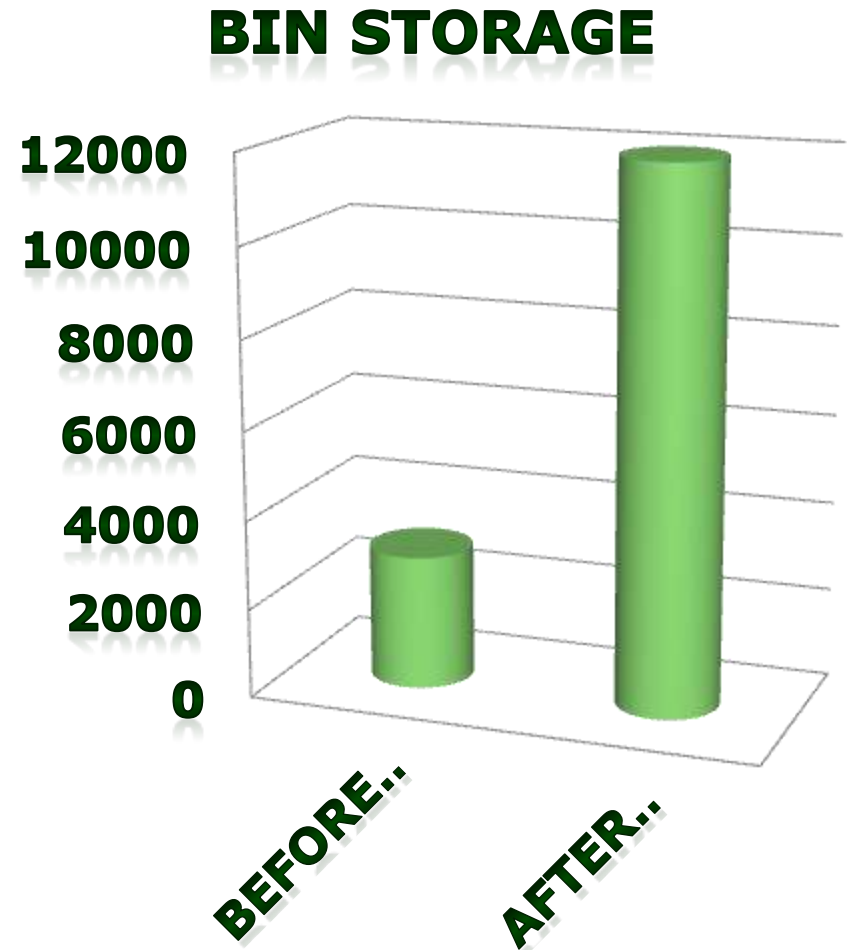
# Other Reasons for C/A

**To decrease  
transport to  
C/A and  
reduce  
greenhouse  
emissions**



# And Still More Reasons for c/a

This permits CCS to increase the volumes we can handle and ultimately increasing overall returns to growers



**CCS will be  
applying state  
of the art  
equipment in  
the construction  
of our C/A  
storage using  
geothermal  
technology to  
cool the rooms.**



**Some of the  
benefits of this  
technology are**



1. Reducing energy costs by as much as 70%
2. Sustainable low CO2 emissions
3. Non-toxic refrigeration
4. Low maintenance



# How efficient is Geothermal Cooling

- For each unit of energy required to run the system, geo-exchange can remove four units of heat energy a coefficient ratio of 4-1



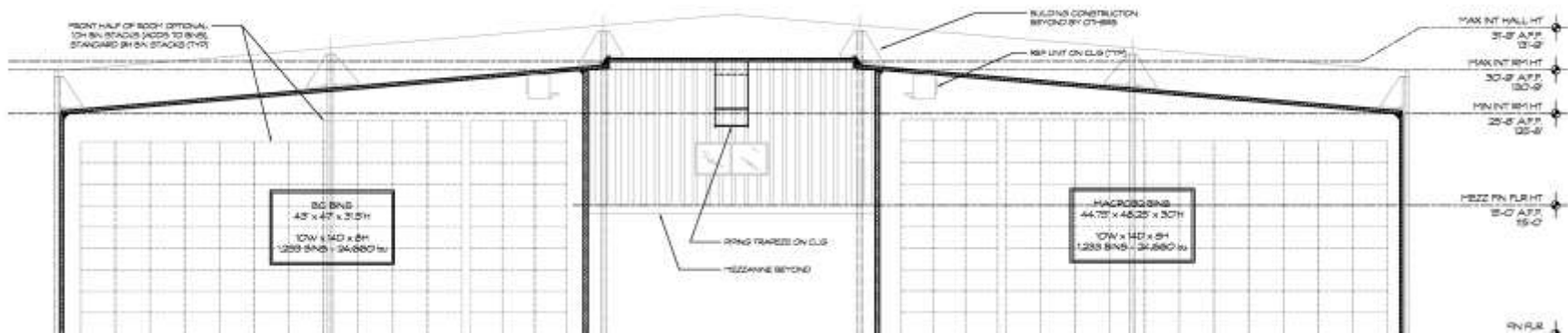
This will  
provide us  
with the  
greenest C/A  
storage in  
B.C.



# THE PROPOSED LAYOUT







# Room construction

Rooms will be constructed with insulated wall panels



# That are

- **Perfect for CA and CS Applications**
- **High-Density XPS with High R-Value**
- **Will Not Lose R-Value Over Time**
- **42" Width, up to 80' Lengths**

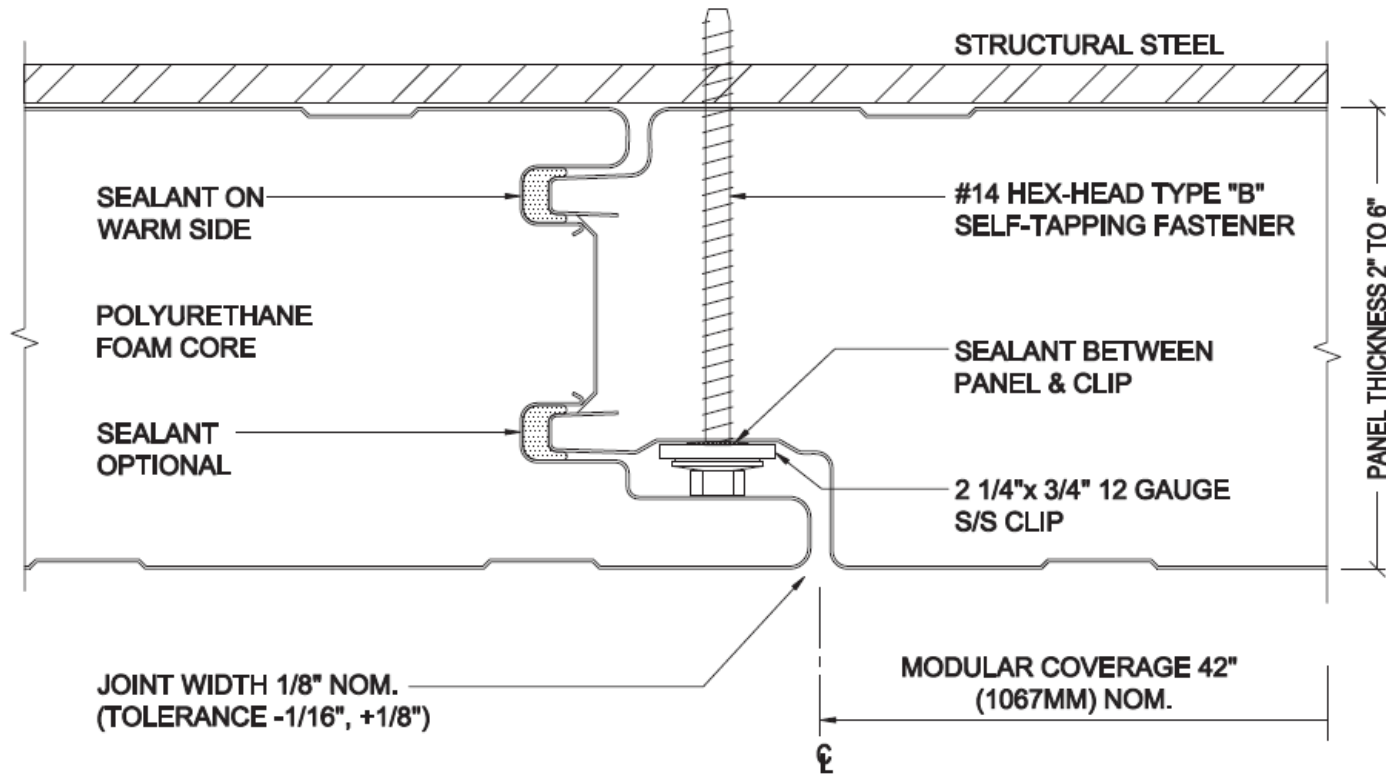


# Featuring

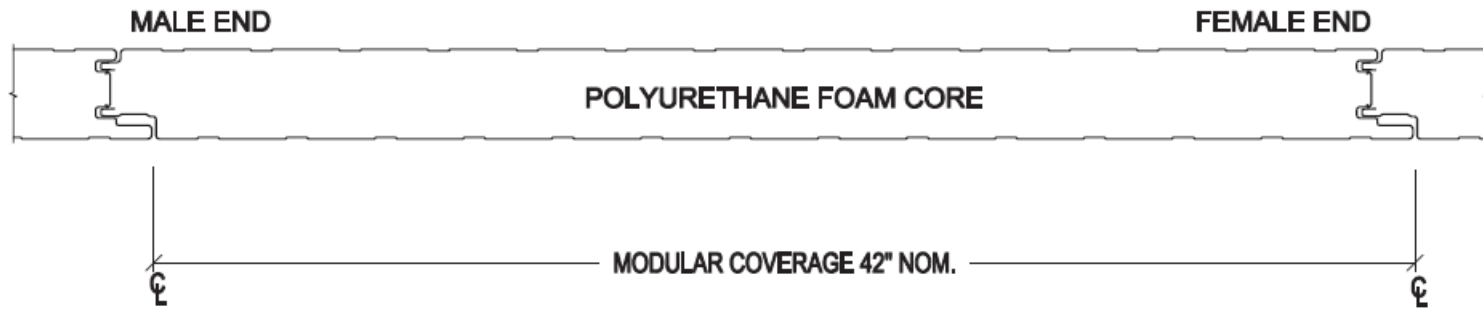
- **Tongue & Groove Connection**
- **Water/Air Tight**
- **Semi-Structural, Suitable for Interior Walls**
- **Easily Washable with Little to No Additional Maintenance**



# panel joint detail



# panel joint detail



# INSIDE IT WOULD LOOK LIKE THIS



# THE MAIN HALLWAY



**The Hallway  
Will Also Be  
Cooled This  
Means More  
Room For  
Air Storage  
Product**





- **This will reduce the CA cost to CCS growers by up to 25% within 3 years, using the modern technology we are proposing**



# ***Labor and Equipment cost's***

***Are being worked out***



- **CCS commits to producing safe wholesome foods utilizing production in the right process environment by properly trained people using good manufacturing practices.**

