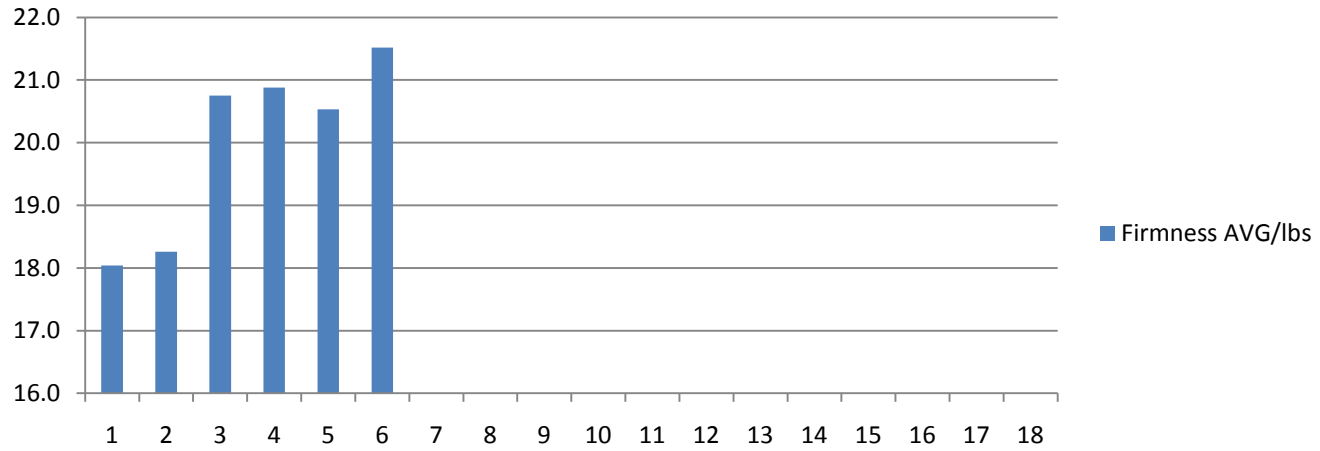


This is a combined supplier report for 2009 and 2010 crop of Ambrosia's

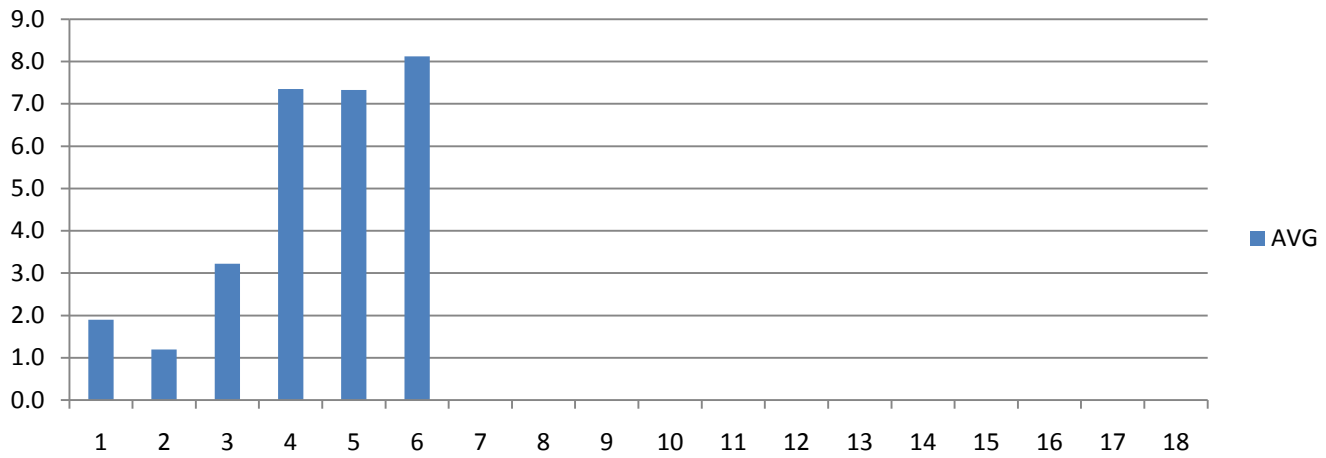
Supplier	CA	AS	total bins	% CA	% AS
Supplier: Big Root	0	92	92	0%	100%
Supplier: Elam's Organics	0	30	30	0%	100%
Supplier: River Valley Orchards Ltd.	440	243	683	69%	31%
Supplier: Muckabout Orchards Ltd.	338	208	546	62%	38%
Supplier: Sunshine Harvest	16	16	32	50%	50%
Supplier: Narind Farm	168	74	242	69%	31%
Supplier: Sally Mennell	92	20	112	82%	18%
Supplier: Old Tower Farm	24	65	89	27%	73%
Supplier: Taylor Farms	39	113	152	25%	75%
Supplier: John Hutchinson	24	99	123	19%	61%
Supplier: Fred Nelson	20	41	61	33%	67%
Supplier: J & G Farm	342	200	542	63%	37%
Supplier: J & R Orchards	65	73	138	47%	53%
Supplier: Tristan Mennell	335	417	752	45%	55%
Supplier: Bhathal, Baljit & Grewal, Jaswinder	103	62	165	63%	37%
Supplier: Bhathal Farm	20	38	58	34%	66%
<b>Total</b>	<b>2026</b>	<b>1791</b>	<b>3817</b>	<b>53%</b>	<b>47%</b>



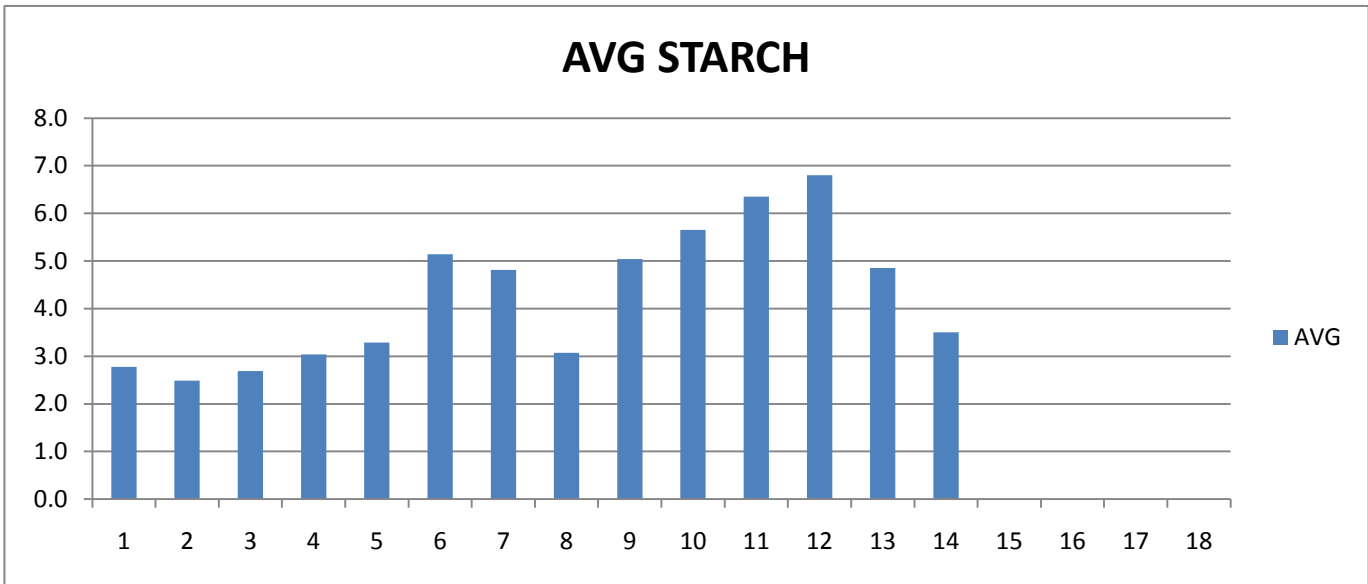
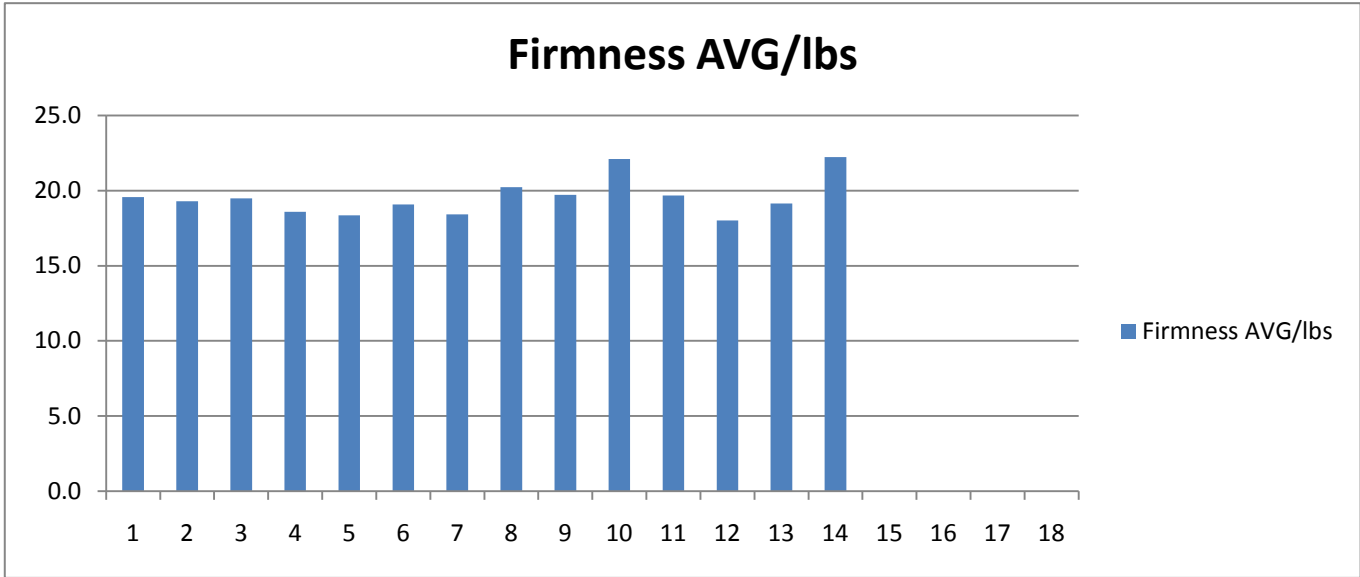
### Firmness AVG/lbs



### AVG STARCH



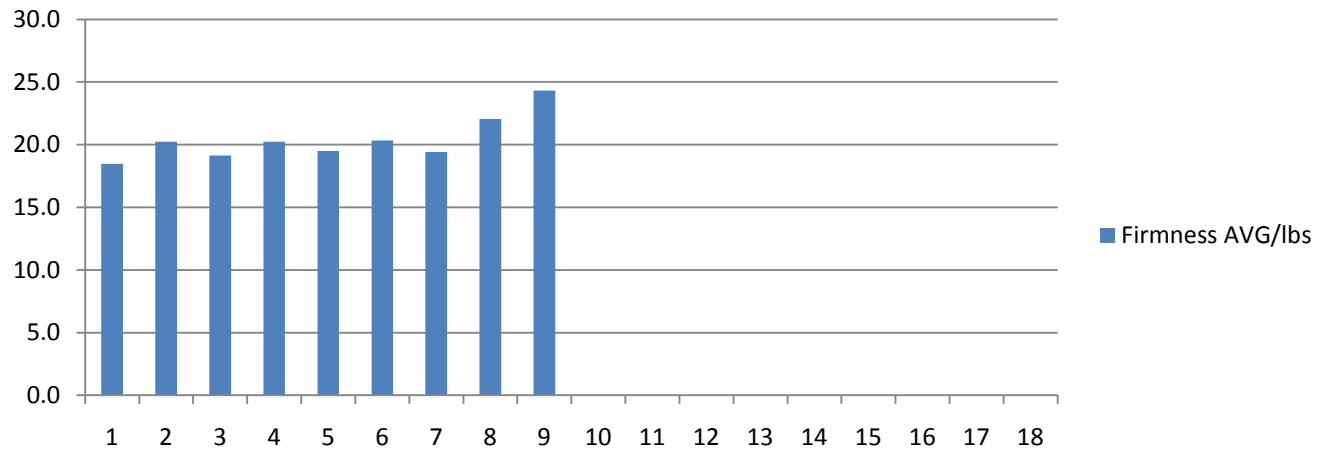




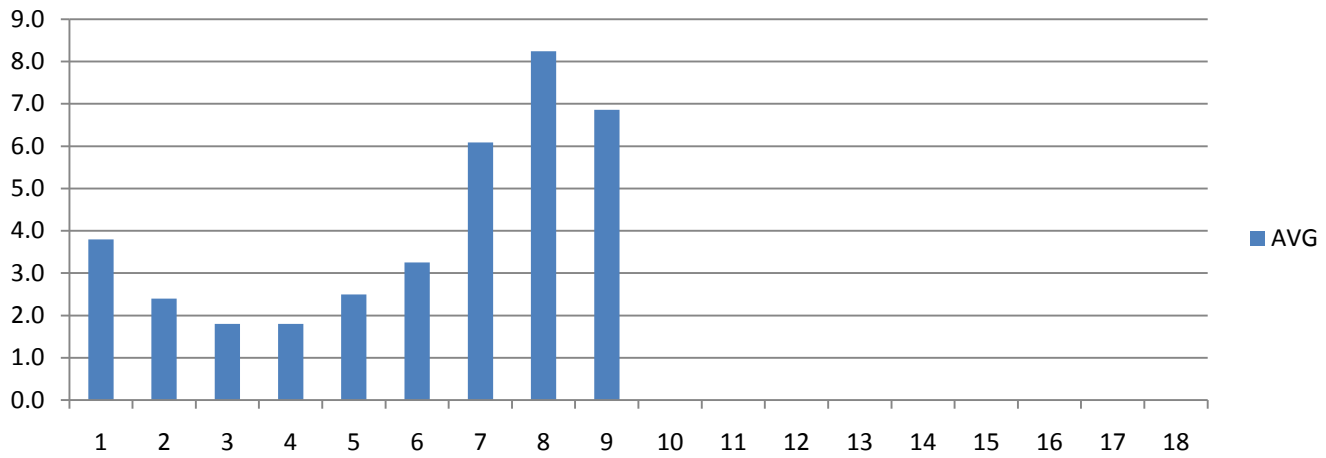




### Firmness AVG/lbs

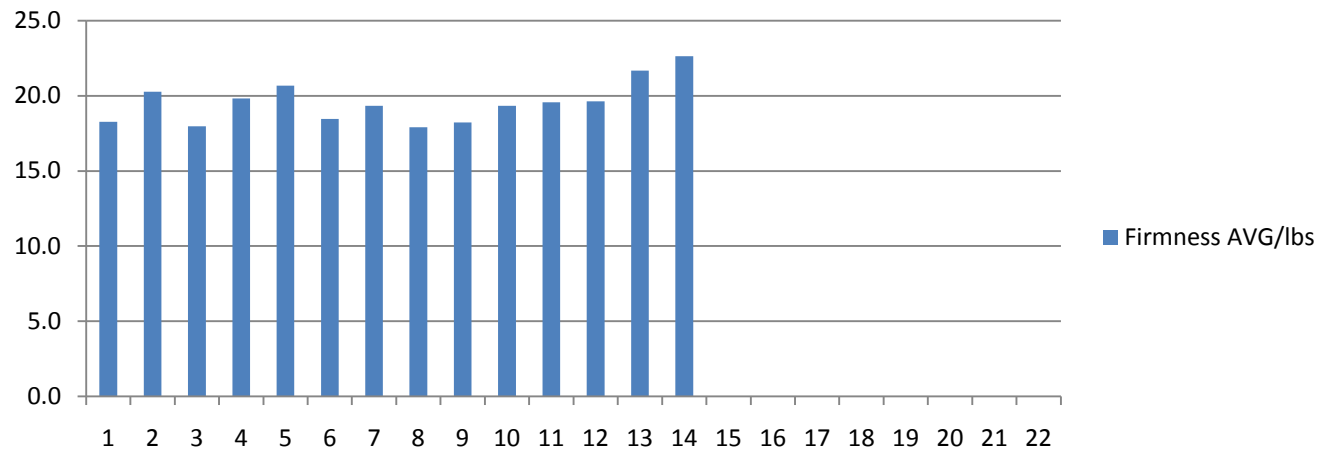


### AVG STARCH

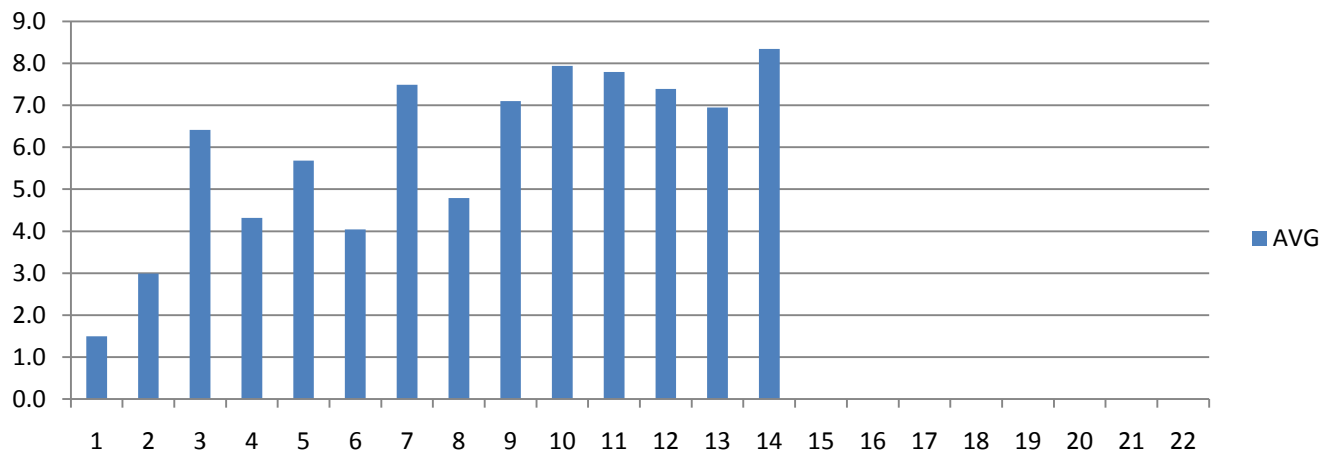




### Firmness AVG/lbs

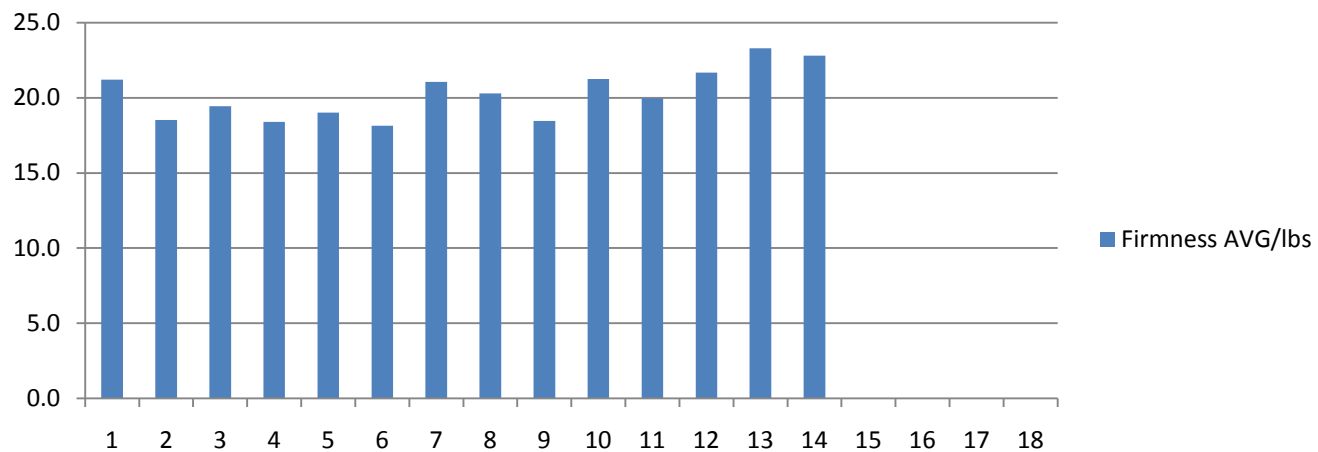


### AVG STARCH

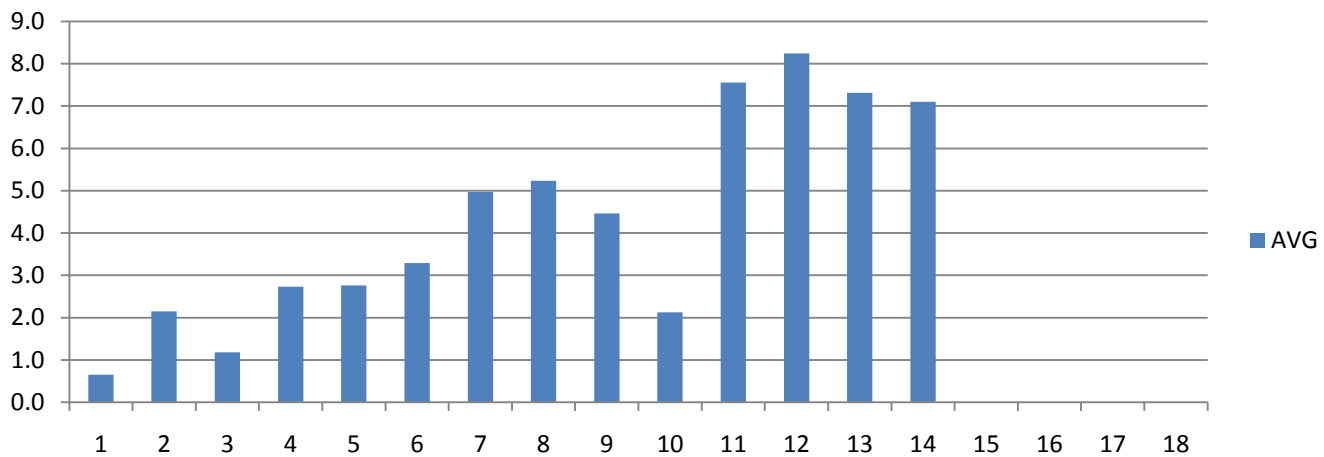




### Firmness AVG/lbs

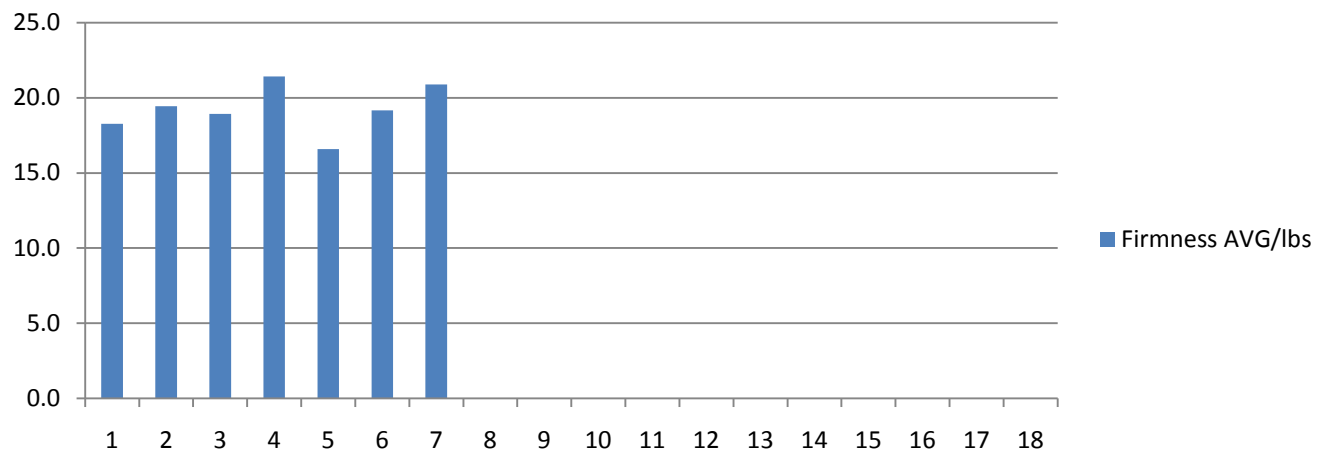


### AVG STARCH

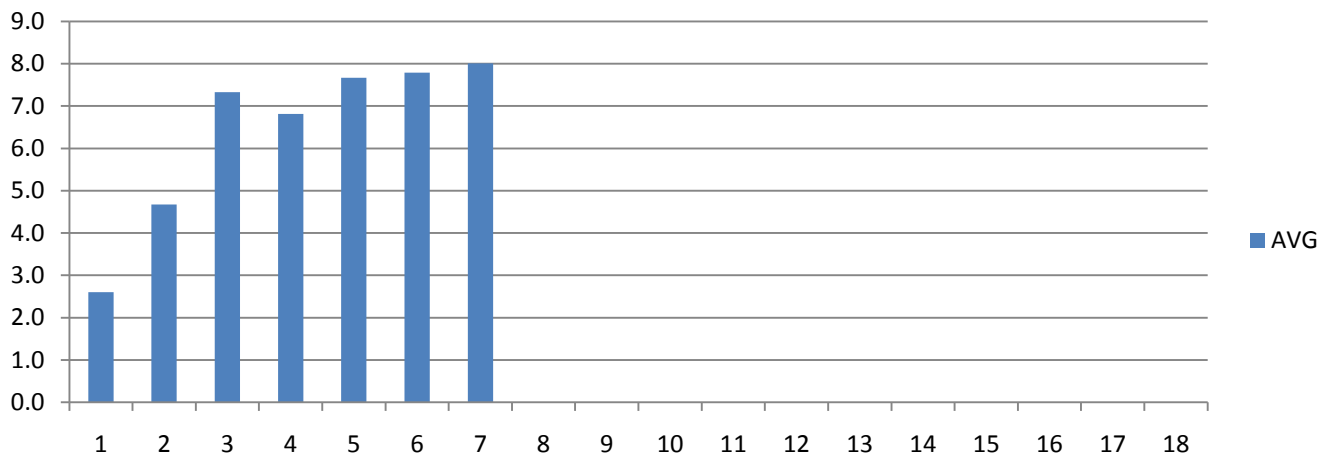




### Firmness AVG/lbs



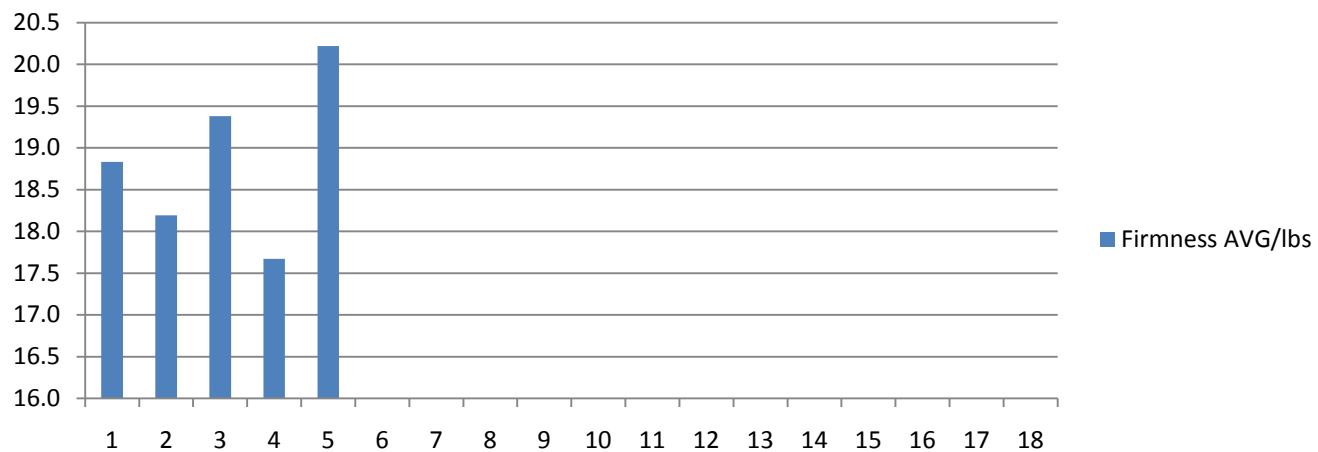
### AVG STARCH



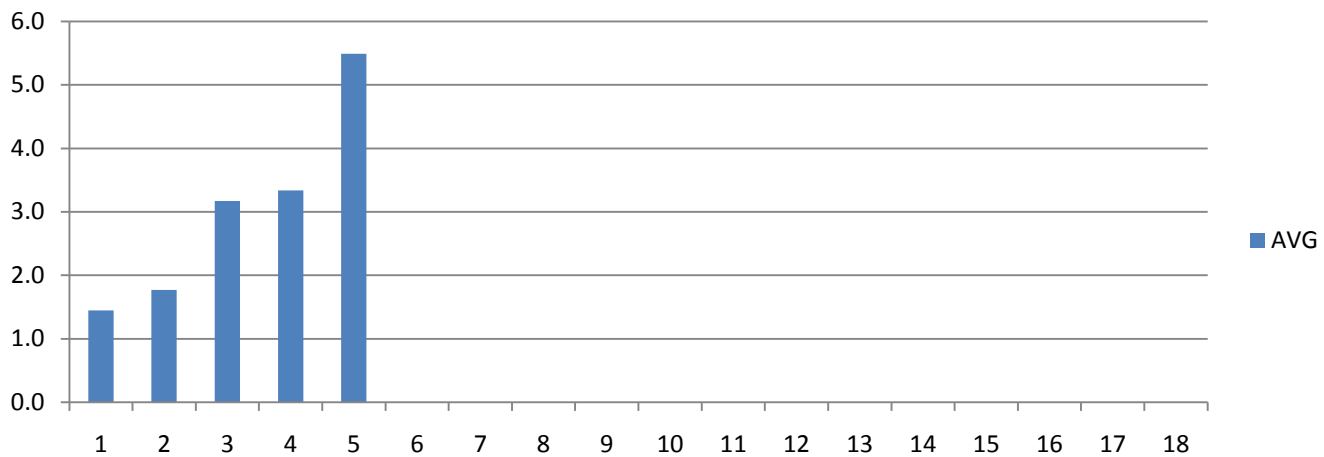




### Firmness AVG/lbs



### AVG STARCH



Name: R.V.O. Product Ambrosia

Pick Date	Ship Date		PRESSURE			Firmness	STARCH			SUGAR	
Date:	Lot ID	Tag #	HI	LOW	AVG/kgs	AVG/lbs	HI	LOW	AVG		COMMENTS
Sept.18,2010	B		9.7	7.2	8.4	18.5	2.5	1.2	2.0	11	all dark and loose.
	E		9.7	7.3	8.3	18.3	2	0.5	1.06	10.2	
	H		10	7.3	8.7	19.1	2.5	1	1.56	11	
	O		10.2	7.6	8.6	18.92	2.7	1.2	1.91	12	one stem bowl split
Sept.22,2010	E						2.7	1.2	1.9		
	H						2.5	1	1.9		
	W						2.7	1	1.9		
Sept.26,2010	Oct.5,2010	15	10.6	7.7	9.34	20.55	3	2	2.76	12	to CA
Sep.27,2010		85	8.75	7.5	8	17.5	4.2	2.5	3	13	shipped 70 bins to CA
Sep.28,2010	Sept.29,2010	201	10	7.8	8.98	19.76	4.2	3	3.9	13	to CA
Sept.28,2010	Sept.29,2010	16	10.1	7.2	9.56	21.03	3	1.2	2.39	13	to CA
Sept.29,2010	Sept.29,2010	243	9.3	8.1	8.72	19.18	3	2.5	2.76	12.2	to CA
Oct.3,2010	na	301	11.5	8.8	9.95	21.89	4.2	2.7	3.39	12	in AS
Oct.4,2010	Oct.5,2010	349	10.4	8.1	9.02	19.84	6.7	2.7	4.77	12	to CA
Oct.4,2010	Oct.5,2010	359	10.4	8.1	9.06	19.93	9	2.7	5.2	11.5	to CA
Oct.12,2010	na	440	9.5	7.2	8.38	18.45	8	4.2	6.36	12	in AS
Oct.12,2010	na	460	10.5	8.3	8.47	18.63	9	3.7	7.97	13	in AS
Oct.5,2010	see comments	384	10	8.1	9.16	20.15	8	3	5.85	12	Packed Oct.13,2010

